

Name \_\_\_\_\_

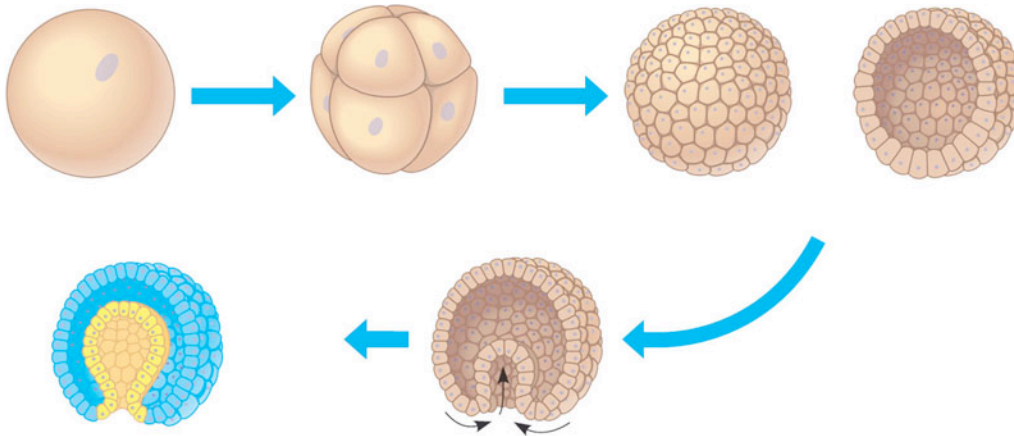
**AP Biology**  
**Chapter 32 - An Overview of Animal Diversity**

**Guided Reading Assignment Campbell's 10<sup>th</sup> Edition**

**Essential Knowledge**

None

1. Define the following terms:
  - a. Cleavage
  - b. Blastula
  - c. Gastrula
  - d. Larva
  - e. Metamorphosis
2. Label the diagram below of early embryonic development



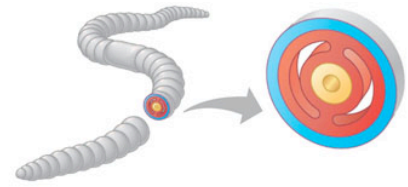
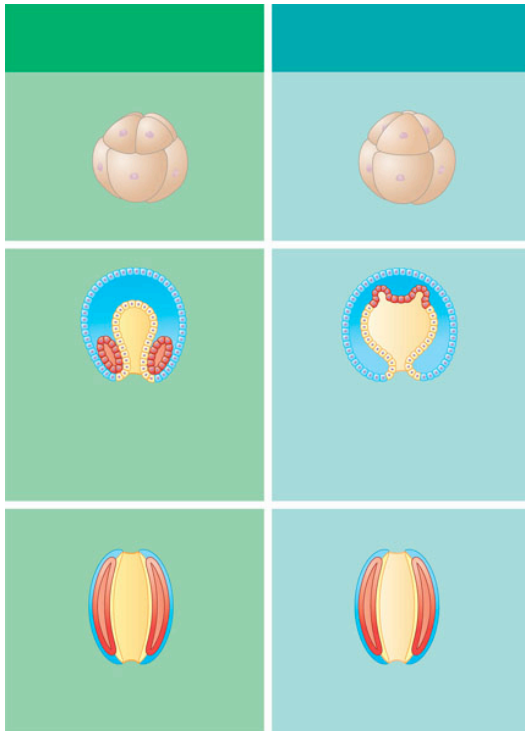
3. What is believed to be the common ancestor of living animals?
4. What are two hypotheses for the Cambrian Explosion?

5. Define the following terms with regard to animal body plans.

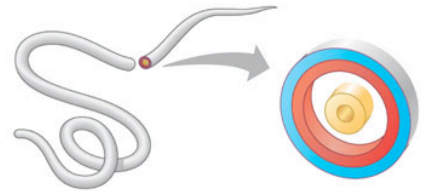
- a. Body plan
- b. Radial symmetry
- c. Bilateral symmetry
- d. Dorsal
- e. Ventral
- f. Anterior
- g. Posterior
- h. Cephalization
- i. Germ layers
- j. Endoderm
- k. Ectoderm
- l. Archenteron
- m. Diploblastic
- n. Triploblastic
- o. Mesoderm
- p. Body cavity
- q. Coelom
- r. Pseudocoelomate
- s. Coelomate
- t. Acoelomate

6. Color and label the following diagram

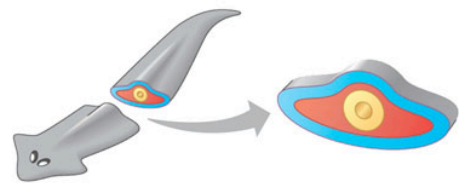
7. Use the unlabeled diagram to compare and contrast protostomes and deuterostomes development.



(a)



(b)



(c)

8. What is the difference between determinate cleavage, radial cleavage and indeterminate cleavage?